

Phonics at Home

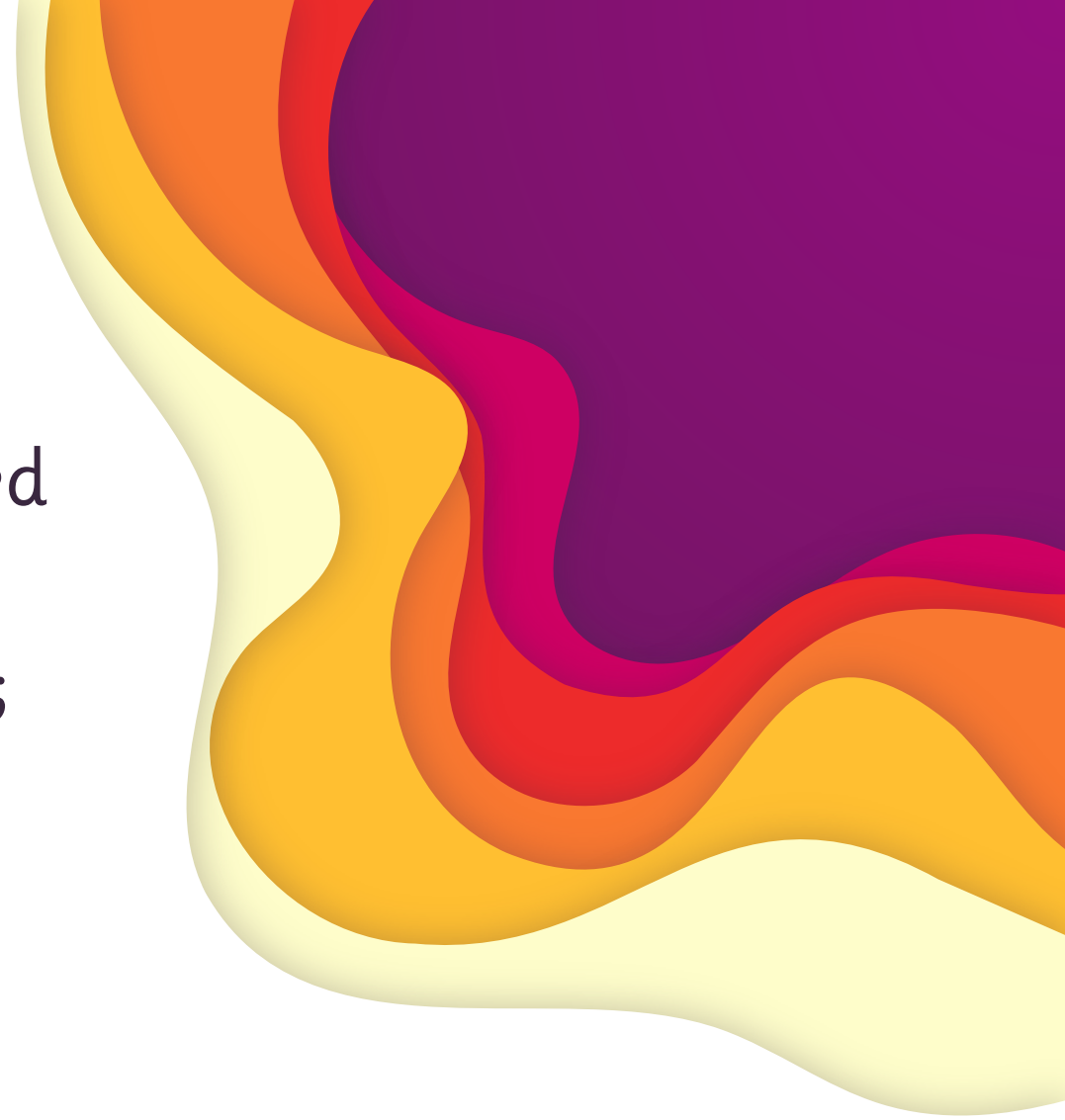
Phase 4

Common Exception Words



What are common exception words?

Common exception words are spellings that we cannot easily use our phonics to decode. They might sometimes be referred to as tricky words. Some of these do follow some rules in the English language; however, this learning does not happen until Phase 6. The children need to learn these words on sight and have lots and lots of practise reading them.



Common Exception Words

said	little	have	one	like
were	so	there	do	what
some	when	come	out	



Phase 4 Flash Cards

The children should practise reading these words regularly. To help with this we have designed flash cards for Phase 4 on our Walter Tube Channel.

