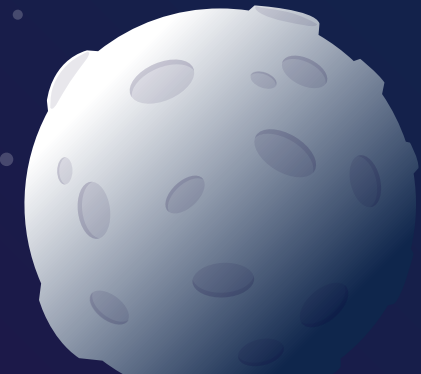



Phonics at Home Phase 3

Common Exception Words





What are common exception words?

- ★ Common exception words are spellings that we cannot easily use our phonics to decode. They might sometimes be referred to as tricky words. Some of these do follow some rules in the English language; however, this learning does not happen until Phase 6. The children need to learn these words on sight and have lots and lots of practise reading them.
- 

Common Exception Words

he

are

she

her

we

was

me

all

be

they

you

my

Phase 3 Flash Cards

The children should practise reading these words regularly. To help with this we have designed flash cards for Phase 3 on our Walter Tube Channel.

