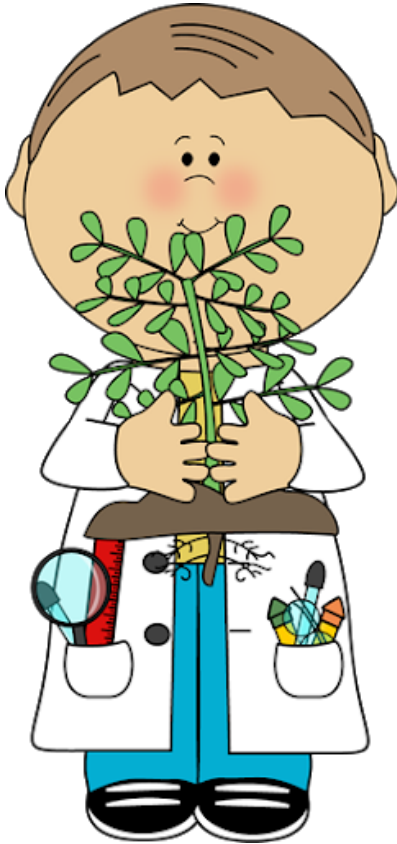


# As Scientists we are studying plants!

---





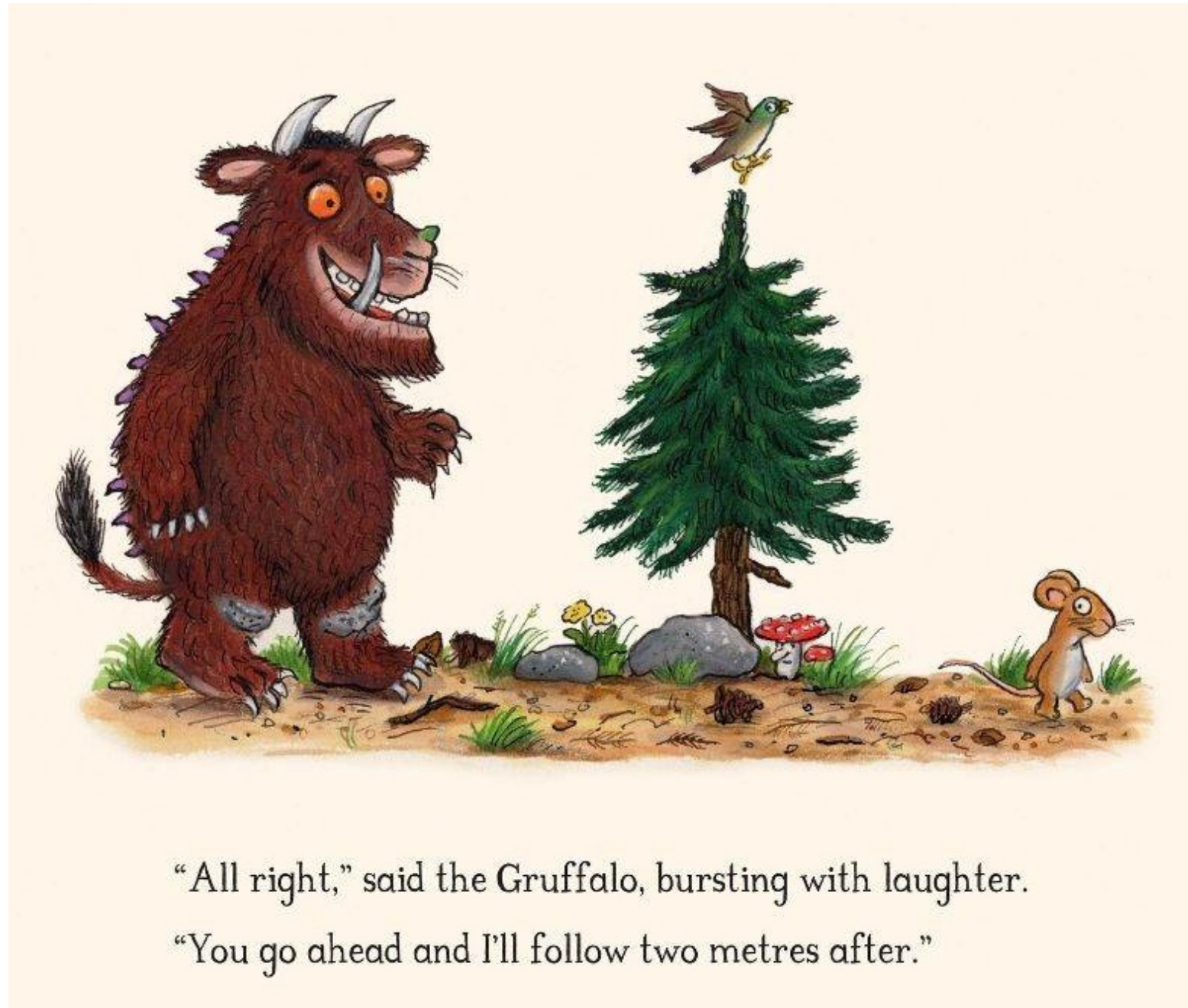
All leaves have their own patterns. We can use these patterns to identify what plants or tree they come from.



Year 2 Scientists, you have two tasks this week. Task one is to go out and use the leaf identification sheet to find out which trees are around you. You'll need to go to a local park or woodland area. Remember, to stay with your grown up and socially distance from people you do not live with! Miss Rees made a video on socially distancing that you might want to watch:

<https://youtu.be/ytidU6DDaV8>

Task two is drawing your favorite leaf. More about this later. Remember, to collect some of your favourite leaves on your journey. You might want to wash these when you get home.



“All right,” said the Gruffalo, bursting with laughter.

“You go ahead and I’ll follow two metres after.”





**Be a super spotter!**

How many trees can you identify?



Beech



Alder



Sycamore



Oak



Birch



Holly



Ash



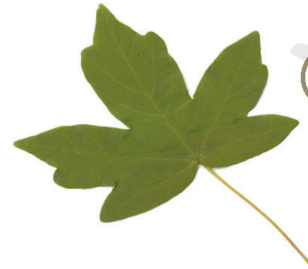
Elder



Horse Chestnut



Rowan



Field Maple



Hawthorn



Hazel

**Found any other leaves? Do you know which trees they're from?**

Feel free to copy and share this for personal and educational use – and don't forget there are loads more brilliant activities to download on our website!

[woodlandtrust.org.uk/naturedetectives](http://woodlandtrust.org.uk/naturedetectives) | 0330 3335301 | [naturedetectives@woodlandtrust.org.uk](mailto:naturedetectives@woodlandtrust.org.uk)

**f** Search for 'nature detectives' | **t** #NatureDetectives

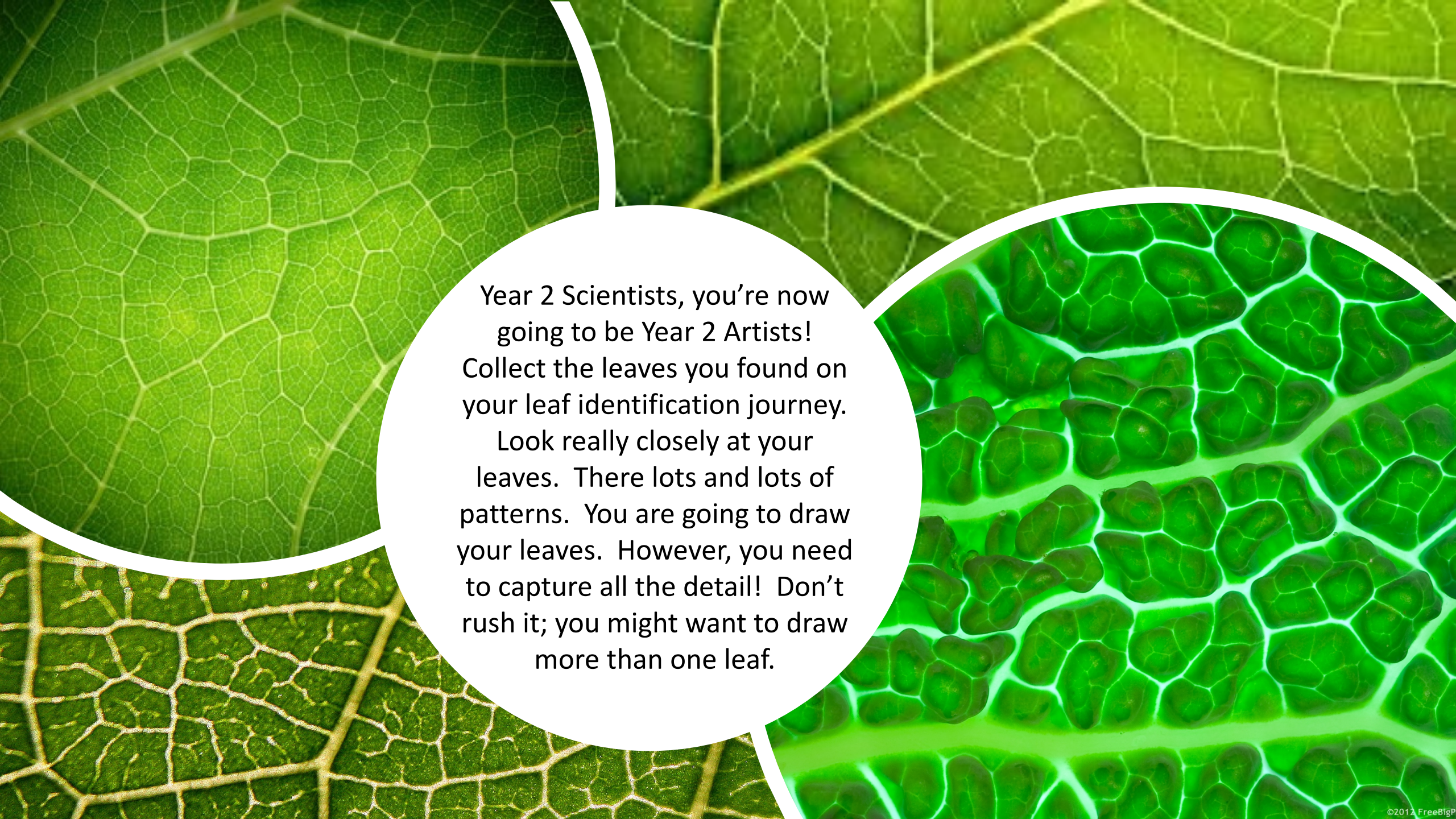
© Made in 2015 by the Woodland Trust (registered charity nos 294344 and SC038885)



**WOODLAND TRUST**







Year 2 Scientists, you're now going to be Year 2 Artists! Collect the leaves you found on your leaf identification journey. Look really closely at your leaves. There lots and lots of patterns. You are going to draw your leaves. However, you need to capture all the detail! Don't rush it; you might want to draw more than one leaf.